

## WHAT YOU CAN DO

### START AT HOME

Clear your property of invasive plants  
Encourage your neighbors to join you

### HELP YOUR COMMUNITY

Participate in removal events  
Map invasives in your favorite areas

### BECOME A DESERT DEFENDER

Attend a training  
Support the partners managing invasive plants  
and preserving our Sonoran Desert



**HELP US AVOID THIS**



**AND ACHIEVE THIS**

For more information and to get involved visit [cazca.org](http://cazca.org)



**A collaborative partnership focused on finding,  
mapping, and removing invasive plant species  
at central Arizona parks and preserves**

# CAZCA

CENTRAL ARIZONA CONSERVATION ALLIANCE

CAZCA is an  
initiative of





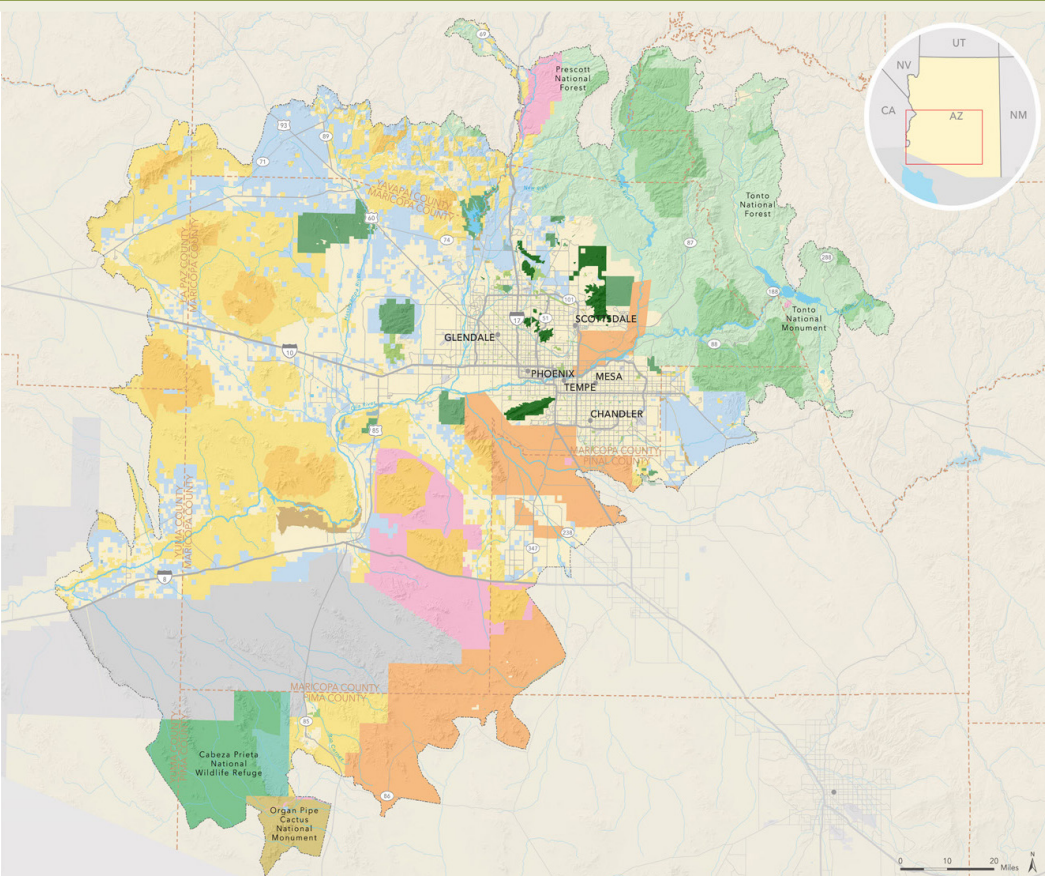
## DESERT DEFENDERS VISION

We envision an inclusive regional network that effectively manages invasive plant species together with community stakeholders so that native plant and wildlife species can thrive.

## DESERT DEFENDERS MISSION

To increase collaboration and public education, to build our capacity to effectively plan, and to support ongoing invasive plant species management across the CAZCA region.

### CAZCA REGION



## WHAT ARE INVASIVE PLANT SPECIES?

Plants that are non native to the Sonoran Desert and whose presence causes or is likely to cause economic or environmental harm or harm human health.

## WHAT PROBLEMS DO THEY CAUSE?

Invasive plants can take over an ecosystem. They reduce biodiversity in native plants and animals. They can cause an increase in wildfire severity and frequency.

## MANAGING INVASIVE PLANTS

Record found invasives in a GIS map (like iNaturalist)

Remove Target species

Monitor Treated areas



## SOME INVASIVE PLANTS IN THE DESERT



**Buffelgrass**  
*Cenchrus ciliaris*



**Stinknet**  
*Oncosiphon pilulifer*



**Fountain Grass**  
*Pennisetum setaceum*